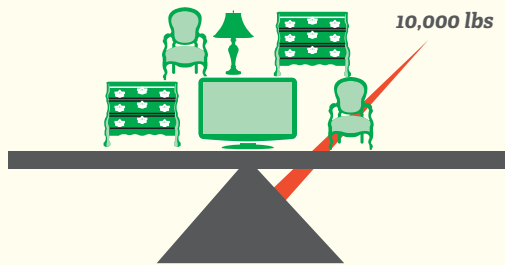


Protecting your personal belongings during your move is as important to you as it is to us. That's why Mayflower offers a plan to protect you if the unexpected happens to your personal items during your move. It is easy to understand, and it's included upfront with every Mayflower move.

Full-Value Protection

Here's how it works:

The default amount of full-value protection is automatically included with your move using the estimated weight of your total shipment.

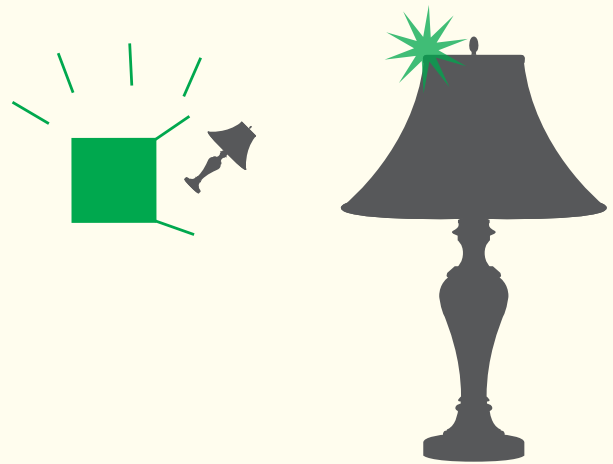


$$\$6 \times 10,000 \text{ lbs} = \$60,000$$

The protection amount is calculated at a rate of \$6 per pound multiplied by the estimated weight of your total shipment. For example, Mayflower will offer \$60,000 in shipment protection for a 10,000 pound shipment.

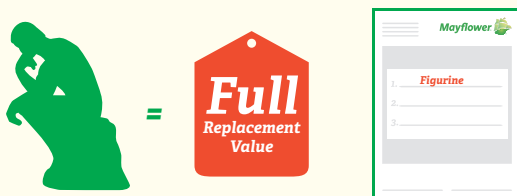
During your move:

If we cause damage or loss to any of your personal belongings they will be either repaired or replaced up to the total amount of the shipment protection that you select.



High Value Inventory

Included with Full-Value Protection is the High Value Inventory Form. This form must be used to list any items valued greater than \$100 per pound. It's important that each item being moved is carefully considered by you with this in mind. So if an item has a value beyond \$100 per pound, be sure to list the item on the High Value Inventory Form.



Without High Value Inventory Completed

$$\text{Figurine} = 2\text{lbs} \times \$100 = \$200$$

With High Value Inventory Completed

$$\text{Figurine} = \text{Full Replacement Value}$$

As you can see, your use of the High Value Inventory Form assures you the full benefit of your Full-Value Protection for your valuable items.

At Mayflower, we understand that moving can be a stressful time, let Full-Value Protection help ease your mind. Please refer to the Mayflower website, www.mayflower.com, for complete details on Full-Value Protection and all of our shipment protection offerings.